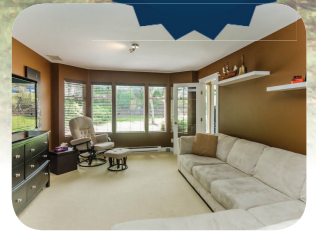


*Wonderful Family Home!
Completely Renovated! Suitable!*

\$344,900
5694 Yorkshire Terrace

Virtual Tours
Photos &
More at
chris-martin.ca

MUST SEE



A completely renovated North Nanaimo family home with easy maintenance landscaping, many fruit trees, an irrigation system, RV parking and a very private fully fenced backyard complete with a covered patio and a hot tub. The next lucky owner of this very bright home will enjoy a skylight, a large bay window, new hard wood floors, new tile floors, new paint, vaulted ceiling, fireplace and 3 entirely renovated bathrooms offering new counters, new vessel sinks, new tub surrounds and lovely decorative tile. This 2,079 sq ft home also boasts a large kitchen with new counters, new backsplash, stainless steel appliances and an eat-in nook. The nook provides convenient access to a large balcony overlooking the kid-friendly backyard and a peek-a-boo ocean view. The spacious master bedroom is on the main level of this wonderful home and offers

a large walk-in-closet and a 3 piece ensuite. This lovely home has a terrific floor plan with large rooms, formal dining area and a separate living room and family room. This home could also easily accommodate a future suite if desired. Hurry; this buyer friendly home within walking distance to beach, parks, bus service and school will sell quickly! Act Now! All data and measurements are approximate and should be verified if important.

For more information, photos
and virtual tour, please visit
www.chris-martin.ca.

Home: 2,079 sq ft | Bedrooms: 4 | Baths: 3 | Taxes: \$2,674 (Before grant)

RE/MAX
OF NANAIMO

1-5140 Metral Drive,
Nanaimo, BC V9T 2K8

Each office is independently
owned & operated

This is not intended to
solicit properties already
listed for sale.

CHRISMARTIN
A name to remember!

Additional photos, virtual tours and more at www.chris-martin.ca

Cell (250) 616-1996 | Bus (250) 751-1223 | Fax (250) 751-1300

Email chris@chris-martin.ca | www.chris-martin.ca

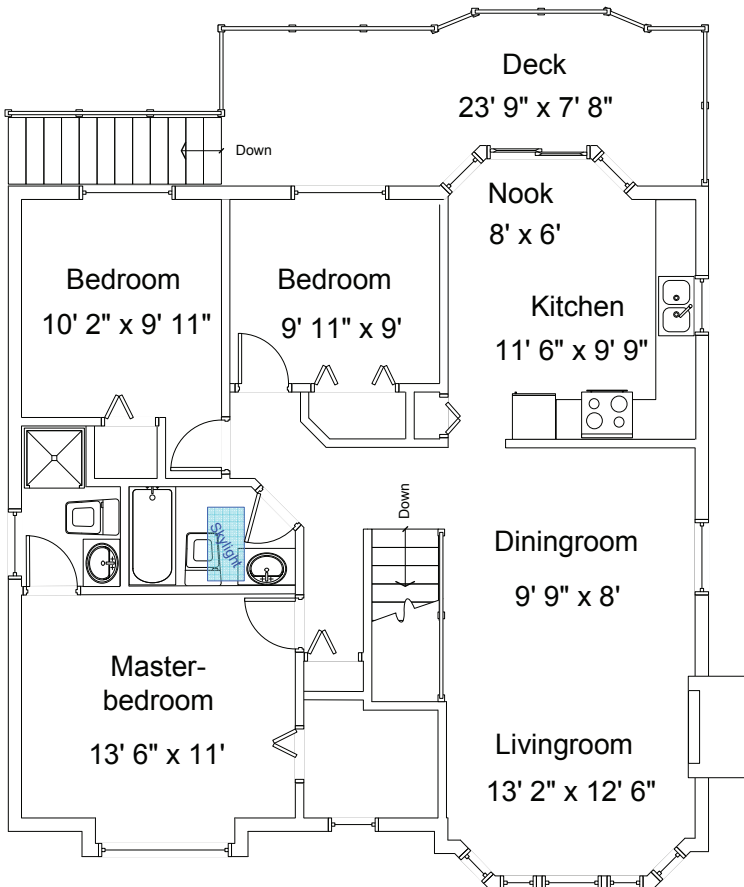
PERSONAL REAL ESTATE CORPORATION



Floor Plan

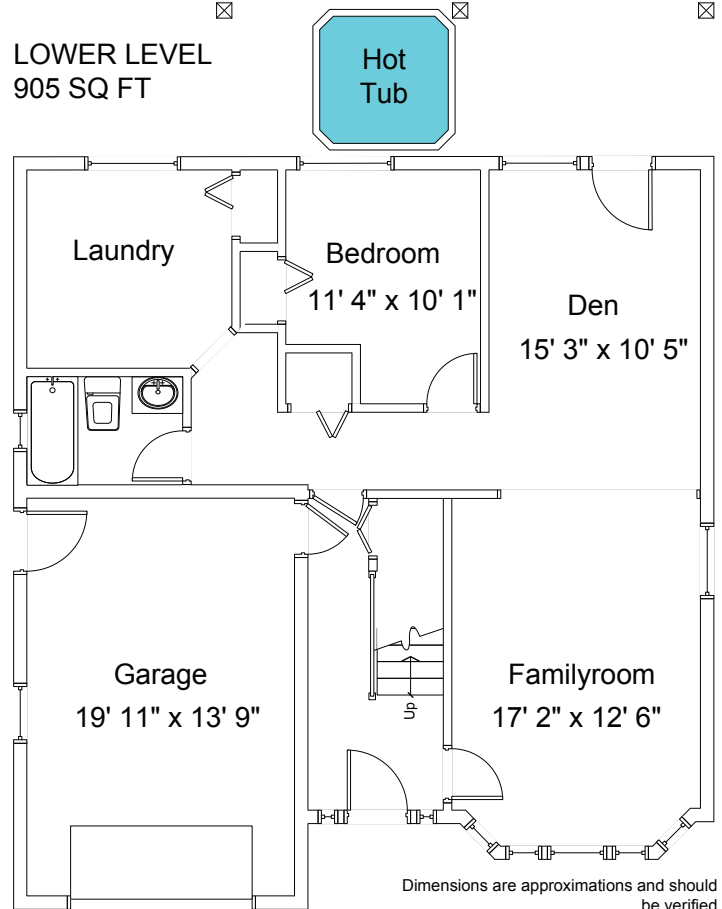
\$344,900
5694 Yorkshire Terrace

MAIN LEVEL 1,174 SQ FT



TOTAL LIVING AREA 2,079 SQ FT

LOWER LEVEL 905 SQ FT



Dimensions are approximations and should be verified

RE/MAX
OF NANAIMO

1-5140 Metral Drive,
Nanaimo, BC V9T 2K8

Each office is independently
owned & operated

This is not intended to
solicit properties already
listed for sale.



CHRISMARTIN
A name to remember!

Additional photos, virtual tours and more at www.chris-martin.ca

Cell (250) 616-1996 | Bus (250) 751-1223 | Fax (250) 751-1300

Email chris@chris-martin.ca | www.chris-martin.ca

PERSONAL REAL ESTATE CORPORATION